



PB-05B

Rating: 3A 125V AC

Contact Resistance: 50mΩ Max

Insulation Resistance:DC 500V 100MΩ Min

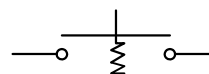
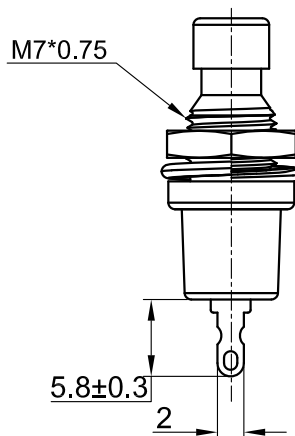
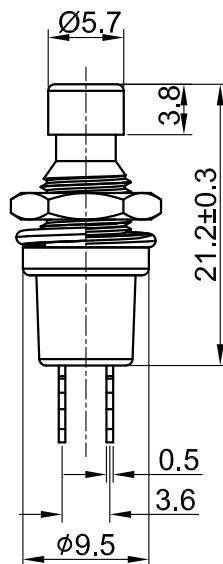
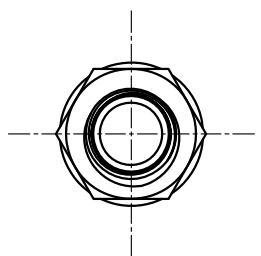
Dielectric Strength:AC 1000V1minute

Total travel:1.4±0.4mm

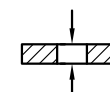
Operating Life:10,000 cycles

Operating Temperature:0°C~85°C

Function:OFF-(ON)



SWITCHING CIRCUIT



Panel Thickness:3mm MAX.

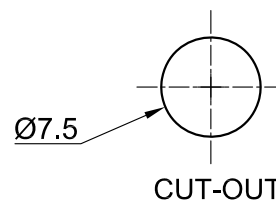
MATERIAL

Base:Brass,Ni plated;

Cap:ABS;

Terminal: Copper,silver or Tin plated;

Nut: Brass,Ni plated.



Y	Yellow	黄色
W	White	白色
U	Blue	蓝色
R	Red	红色
O	Orange	橙色
G	Green	绿色
B	Black	黑色
A	Gray	灰色
CAP COLOR (X)		

				公差 TOLEANCES		.X± 0.3	.XX± 0.15	角度	± 1°	单位 DIMENSION UNIT	mm.
				版本 VERSION	A1	比例尺 SCALE	NONE	日期 DATE	2020.07.15	品名 TITLE	图号 DRAWING NO
				核准 APPROVED BY		核对 CHECKED BY	Z. H. B.	绘图 DRAWN BY	HXG	PB-05B-R	PB-05B-R_A1
版本 VER.	变更说明 CHANGE DESCRIPTION	日期 DATE	ECN NO.								