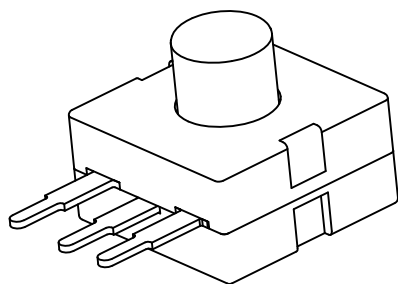
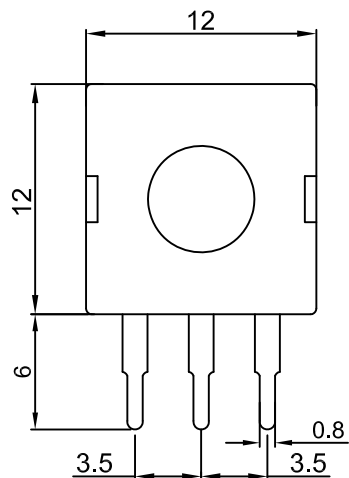




TS202



SPECIFICATIONS:

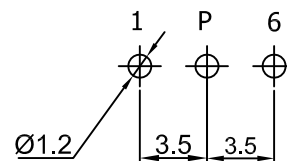
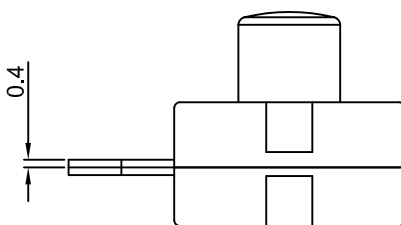
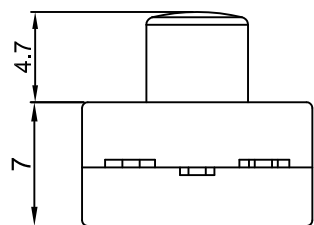
- Rating: DC30V 1A ;
- Contact resistance: 100m Ω (Max.) ;
- Insulation resistance: DC500V 100M Ω (Min.) ;
- Withstand voltage: AC 1000V for 1 minute ;
- Operating force: 700±150g ;
- Life cycle: 20,000 cycles ;
- Total Travel: 1.5±0.3 mm .

MATERIAL:

- Frame:Nylon66,UL rated:94V-2 Min. ;
- Cap:POM ;
- Terminal:Brass,Silver or Tin plated .

Function:

ON(P-6)-OFF-ON (P-1)-OFF



P.C.B. LAYOUT

|   |           |
|---|-----------|
| X | Cap Color |
| R | Red 红色    |
| Y | Yellow 黄色 |
| G | Green 绿色  |
| B | Black 黑色  |
| U | Blue 蓝色   |
| W | White 白色  |
| A | Gray 灰色   |

|         |                         |                |         |                   |          |             |             |                       |                 |
|---------|-------------------------|----------------|---------|-------------------|----------|-------------|-------------|-----------------------|-----------------|
|         |                         | 公差 TOLERANCES  |         | .X± 0.3 .XX± 0.15 |          | 角度 ± 1°     |             | 单位 DIMENSION UNIT mm. |                 |
|         |                         | 版本 VERSION     | A1      | 比例尺 SCALE         | NONE     | 日期 DATE     | 20204.07.15 | 品名 TITLE              | 图号 DRAWING NO   |
|         |                         | 核准 APPROVED BY | 王龙      | 核对 CHECKED BY     | Z. H. B. | 绘图 DRAWN BY | 黎夏          | TS202-31-4-B(高柄)      | TS202-31-4-B_A0 |
| 版本 VER. | 变更说明 CHANGE DESCRIPTION | 日期 DATE        | ECN NO. | APPROVED BY       | 王龙       | CHECKED BY  | Z. H. B.    | DRAWN BY              | 黎夏              |